

CR-Scan Ferret Pro

Wireless scanning, 0.1mm accuracy



WiFi6



Anti-shaking

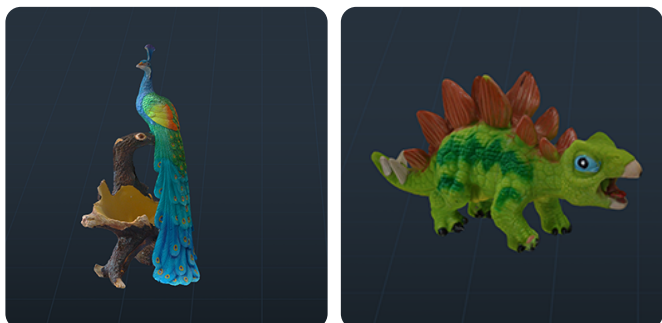
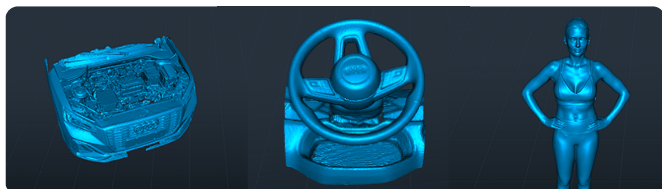


Faster transmission



Wide Application

For medium to large objects, Ranging from 15cm to 2meter.



Anti-shake Tracking

New one-shot 3D imaging technology makes scanning smooth even with shaky hands, dramatically increasing the scanning success rate.

Scan Black/Metal Objects Without Spraying

Without scanning spray, you can scan cars, car parts, tires, and other black/metal objects to get the desired model effect.

24-bit Full-color Scanning

Built-in 2MP high-resolution color camera captures full-color 3D models, displaying the original colors and bringing every intricate detail to life. In addition, a unique face mapping algorithm restores detailed features of the face to get a vivid model.

High Quality & Fast Scanning

High-Quality Mode

Up to 0.1mm accuracy ensures better dimensional accuracy and captures more details.

Fast Scan Mode

The built-in specific 3D imaging ASIC chip provides computing capability, enables fast scanning for medium and large objects.

WiFi6 Wireless Bridge

Using the most advanced WiFi6 high-speed wireless network, 3 times faster than WiFi5, it meets the transmission bandwidth required for high-precision scanning and improves the transmission efficiency, making data collection smoother.

Easy to Get Started

With just one click, you can effortlessly model after scanning without complex scanning knowledge. Novices can quickly commence their journey and swiftly obtain the desired scanning model.

Compact and Portable

This lightweight device weighs only 105g, making it easy to carry anywhere. It allows you to scan anything that you find interesting and adds a fun element to your journey. You can take home your favorite sculpture as a special keepsake.

Outdoor Scanning

Engineered with advanced optical technology and an intelligent algorithm, CR-Scan Ferret Pro has higher environmental adaptability and maintains excellent performance even in sunlight (<30000 lux).

Wide Application

For medium to large objects, Ranging from 15cm to 2meteere

Product Parameters

Product Name	CR-Scan Ferret Pro
Resolution/Point Distance	0.16mm
Working Distance	150~700mm
Frame Rate/Scan Speed	up to 30 fps
Scan Size	150~2000mm
Accuracy	0.1mm
Wireless Connection	Wifi6
Operating Systems	iOS, Mac, Window, Android
Single Capture Range	560×820mm@700mm
Output Format	OBJ / STL/PLY
Battery Grip	5000mAh

